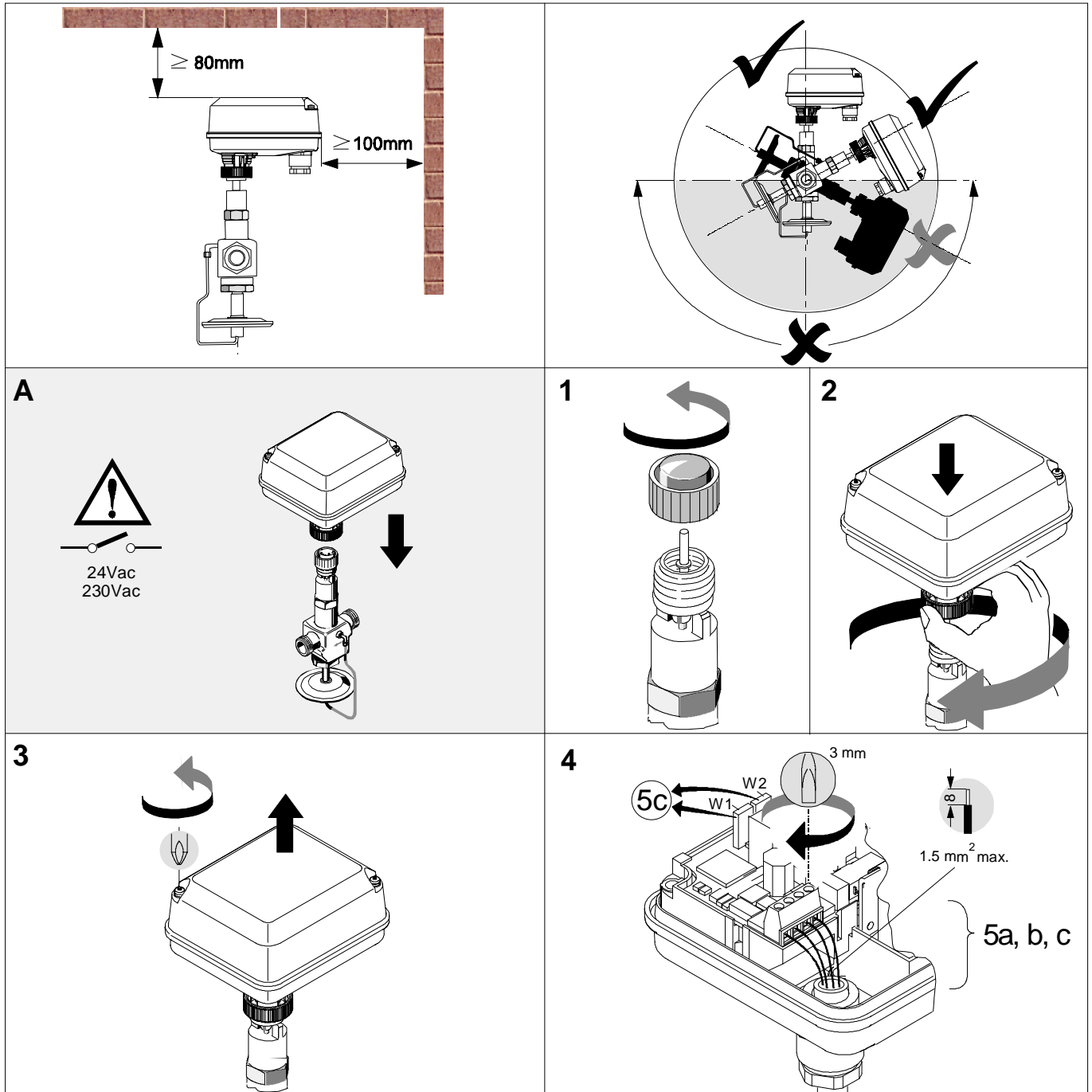


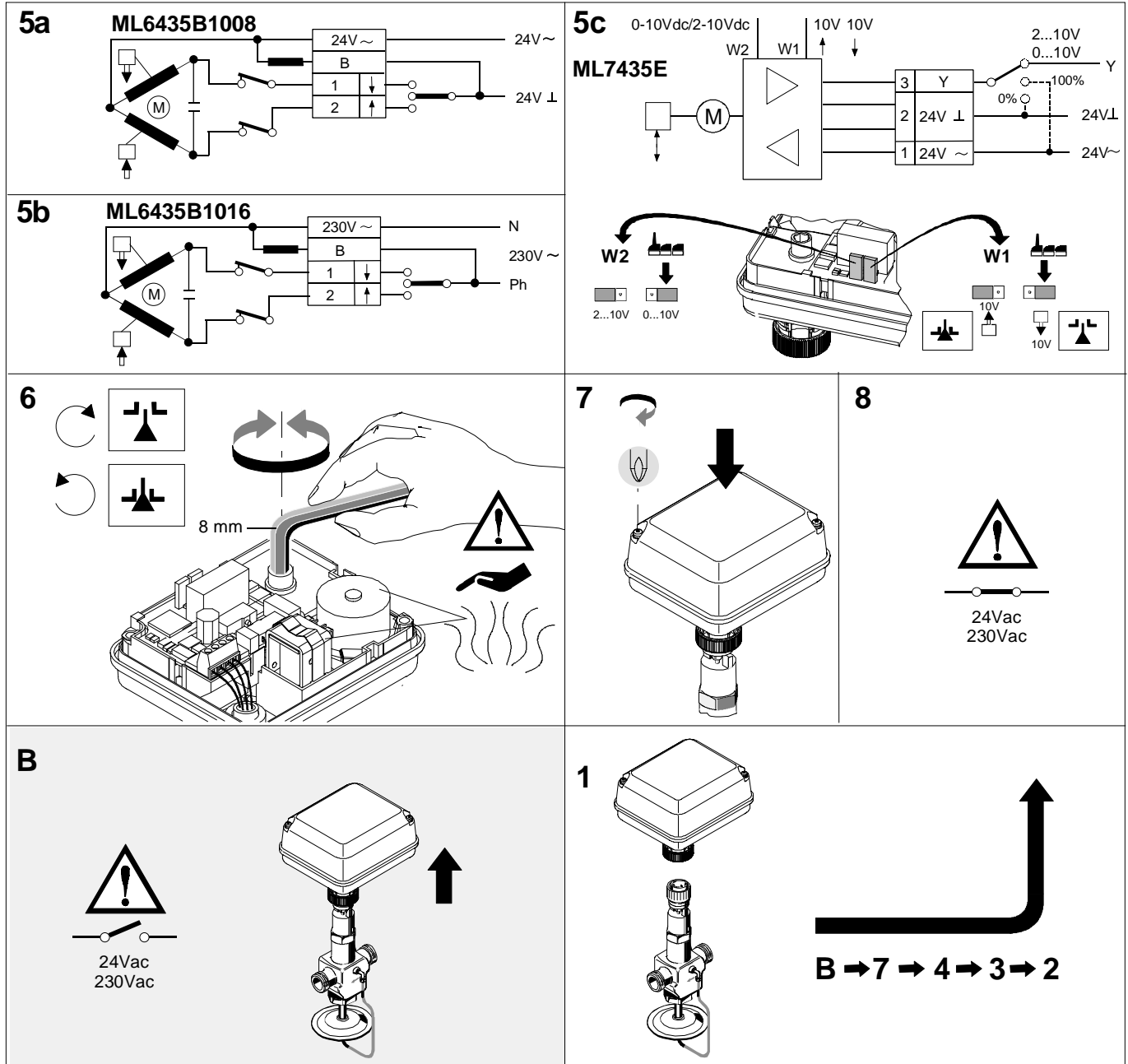
- (D) Montageanweisung.....Elektrischer Ventiltrieb
- (F) Instructions d'Installation.....Servomoteur de Vanne avec ressort de rappel
- (I) Istruzioni per l'installazione.....Attuatore elettrico lineare con molla di ritorno per valvole
- (NL) Installatievoorschrift.....Lineaire elektrische klepmotor met veerretour
- (DK) Installationsinstruks.....Elektrisk lineær spring-retur ventilmotor
- (N) Installationsinstruksjoner.....Elektrisk ventilmotor mv fjær-retur
- (SF) Asennusohje.....Sähköinen lineaarinen jousipalautteinen venttiilin toimilaite
- (S) Installations Instruktioner.....Linjärt ventilställdon med fjäderåtergång
- (E) Instrucciones de montaje.....Actuador eléctrico lineal, con muelle de retorno, para válvulas

## ML6435B/ML7435E

### Electric Linear Actuators for Floating/Modulating Control

#### INSTALLATION INSTRUCTIONS





**Honeywell**

Honeywell Regelsysteme GmbH  
 Honeywellstr. 2-6  
 D-63477 Maintal  
 Tel. (0 61 81) 401-1  
 Fax (0 61 81) 401-400

Subject to change without notice. Printed in Germany

Manufacturing location is certified according to **DIN**  
 EN ISO 9001

EN1B-1001GE02 R0399